

# LAB 2

## Objects Properties

---

### GOALS:

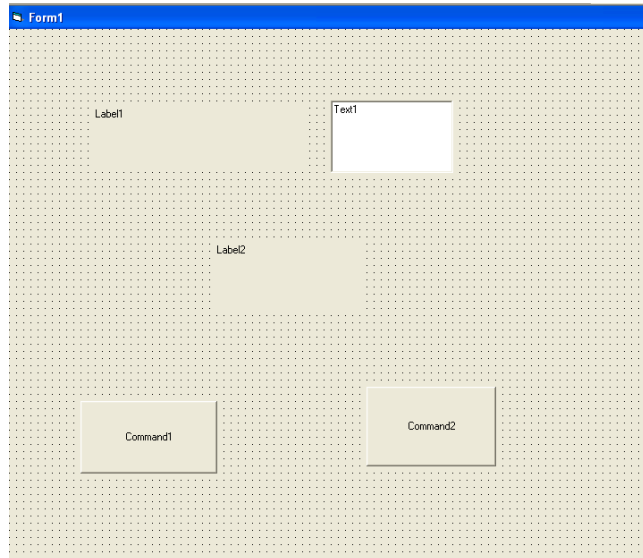
1. Students will be able to change the object's caption or text.
2. Students will be able to create quick key shortcuts using the "&" symbol in the caption property.

### ESSENTIAL QUESTIONS

1. What are the purposes of properties for each object?
2. Why are key shortcuts necessary?

### PART 1:

**Step 1:** create the following form below with the objects:



**Step 2:** name all of the objects to the following

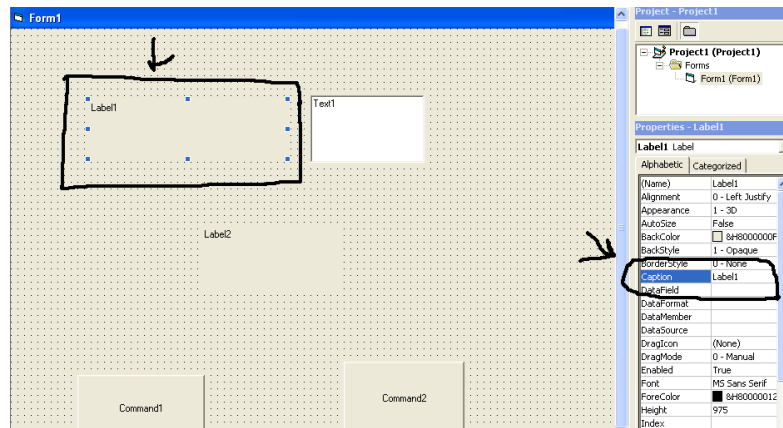
Form → frmLab2  
Label1 → lblDisplay  
Text1 → txtInput  
Label2 → lblDisplayAns  
Command1 → cmdCal  
Command2 → cmdDone

**\*\*\* Note: When you start programming please use the following steps: \*\*\*\*\***

- A. Create your form with all objects
- B. Name all your objects with appropriate names using the three letter prefix.
- C. Change all Captions and set properties

**You will notice by naming all your objects has no effect to the design view. Naming your objects now lets you refer to each object by its name.**

**Step 3:** Change the caption of your objects. To change the caption of all your objects, you must select the object and go to the property window and select the caption property.



Change it to **“Please input a value”**

**\*\*\* You should notice that “Please input a value” will appear in the label object named lblDisplay**

Step 4: Select the text box and go to its text property and delete “Text1” and leave it blank.

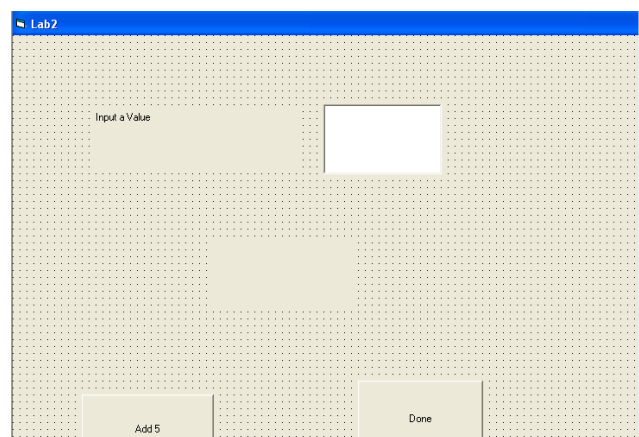
Step 5: Select the Label2 object and go to its caption property and delete “Label2” and leave it blank.

Step 6: Select the cmdCal object and go to its caption property and change it to “Add 5”.

Step 7: Select the cmdDone object and go to its caption property and change it to “Done”.

Step 8: Select the form by clicking in the gray area and change its caption to “Lab 2”.

**Your screen should look like the following:**



## CREATING SHORTCUT KEYS

Shortcut keys are letters that are underlined usually in the menu that allows the user to press the alt key with the letter that is underlined to open it up. Some people find it faster than using a mouse. For example: If you look at the VB IDE menu “File”, you will notice that the “F” is underlined which allows the user to press alt-F to

open it instead of using the mouse. You will also notice that each command in the File menu has a command with an underline letter as well. This allows the user to navigate through the environment without using a mouse. This is how it was done before the mouse came along.

**\*\*\*Note: It is not a good idea to have the same letter underlined when the user is selecting a command. \*\***

### **Create a shortcut key**

**Step 1: Select the cmdDone object** with the caption “Done”. Change its caption to the following “&Done”

**Step 2: Select the cmdCal object** with the caption “Add 5”. Since we use the letter “D” for the Done button, we will have to pick a different letter for “Add 5”. Select the caption of the cmdCal button and change it to “&Add 5”.

Notice that the letter “D” in the “Done” button and the letter “A” in the “Add 5” button are both underlined and by pressing the alt button (during runtime) with the letter that is underline will select that button without using the mouse.

### **Object Properties**

Each object has many properties. By selecting the object causes the property window to display the properties of the object.

### **Experiment**

Practice with the properties of each object on the screen to see what can be done. There is no way we can cover each object’s properties.

Try changing the Font of the objects

Try changing the Background Color of each object including the form

Try the visible property of the objects

### **Questions:**

- 1. Why are properties important for objects?**
- 2. Can two objects share the same letter for shortcut keys?**
- 3. What does the visible property do?**